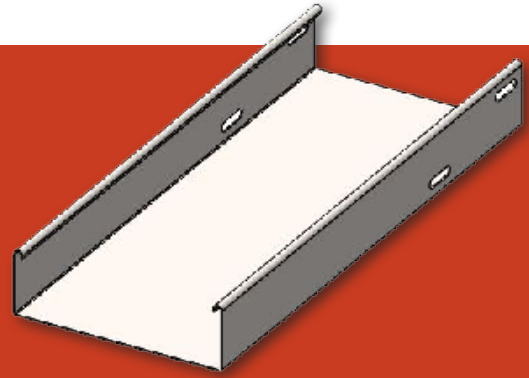
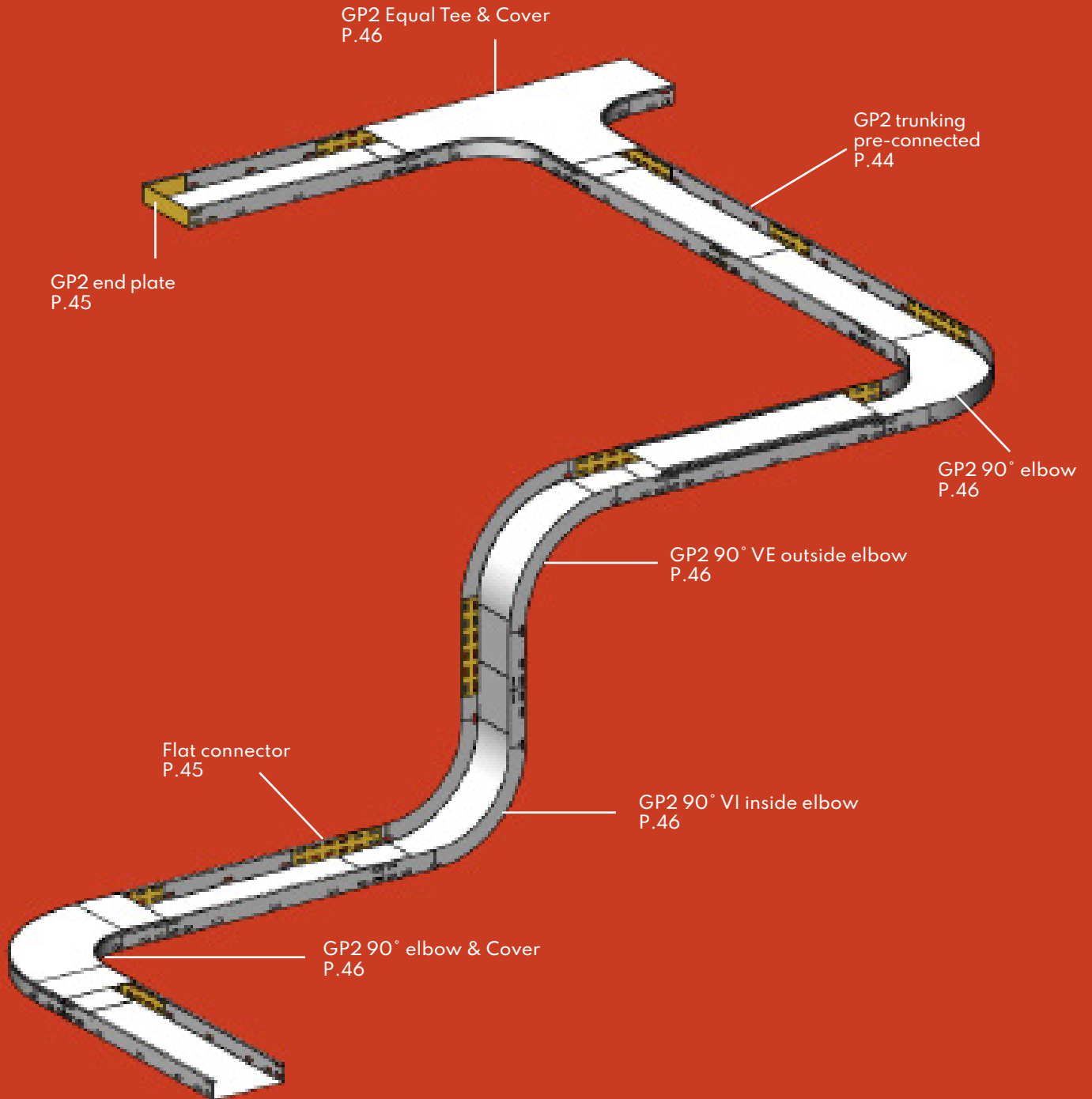


Trunking

Manufacturing from A to Z



Trunking



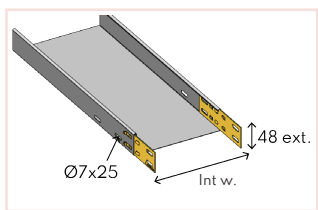
The essentials in **RED** and **BLACK** : Products available on stock
References in **GREEN** : Products on request.

Trunkings

Trunkings - Height 48

GP₂ PE

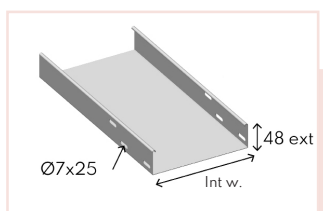
3 meters. Other dimensions on request.
Pre-connected in factory. Epoxy optional.
Load curve identical to OBR2.



	Pack. ML	Width MM	Kg/ML	SZ	HDG	Magnelis®
GP2 51 PE	6	51	0.80	180051	280051	M-180051
GP2 99 PE		99	1.00	180101	280101	M-180101
GP2 147 PE		147	1.55	180151	280151	M-180151
GP2 195 PE		195	1.85	180201	280201	M-180201
GP2 316 PE		316	3.50	180301	280301	M-180301
GP2 412 PE		412	5.15	-	-	-
GP2 508 PE		508	5.80	180501	-	-

GP₂

3 meters. Safe flanges : return flanges.
Other sizes on request. Epoxy optional.
Internal connecting with EP2 flat connector. Provide four 6x12 TRCC bolts per connector.
Load curve identical to OBR2.

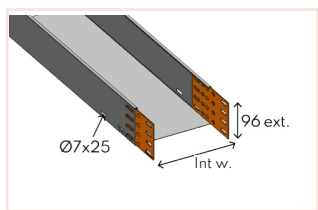


	Pack. ML	Width MM	Kg/ML	SZ	HDG	SS316L	Magnelis®
GP2 51	6	51	0.80	180050	280050	680050	-
GP2 99		99	1.00	180100	280100	680100	M-180100
GP2 147		147	1.55	180150	280150	680150	-
GP2 195		195	1.85	180200	280200	680200	-
GP2 316		316	3.50	180300	280300	680300	-
GP2 412		412	5.15	-	-	-	-
GP2 508		508	5.80	-	-	-	-

Trunkings - Height 96

GP₄ PE

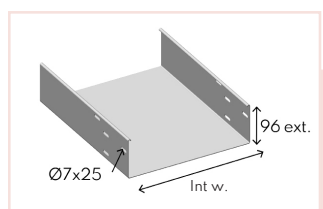
3 meters. Other sizes on request.
Pre-connected in factory. Magnelis® on request. Epoxy optional.
Load curve identical to OBR4



	Pack. ML	Width MM	Kg/ML	SZ	HDG
GP4 99 PE	6	99	2.35	197101	297101
GP4 147 PE		147	3.40	197151	297151
GP4 195 PE		195	3.90	197201	297201
GP4 316 PE		316	6.30	197301	297301
GP4 412 PE		412	9.00	197401	297401
GP4 508 PE		508	10.40	197501	297501

GP₄

3 meters. Safe flanges : return flanges.
Magnelis® on request.
Other sizes on request. Epoxy optional.
Internal connecting with EP4 flat connector. Provide four 6x12 TRCC bolts per connector.
Load curve identical to OBR4.



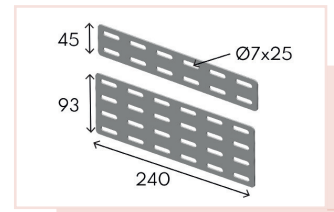
	Pack. ML	Width MM	Kg/ML	SZ	HDG	SS316L
GP4 99	6	99	2.35	197100	297100	697100
GP4 147		147	3.40	197150	297150	697150
GP4 195		195	3.90	197200	297200	697200
GP4 316		316	6.30	197300	297300	697300
GP4 412		412	9.00	197400	297400	697400
GP4 508		508	10.40	197500	297500	697500

Flat connectors

Allows two trunkings to be connected to each other.
Provide four 6x12 TRCC bolts per connector.

EP

	Pack. P	Height MM	Kg/P	SZ	HDG	SS316L
EP 2	25	45	0.13	160000	260000	660000
EP 4		93	0.31	196000	296000	696000



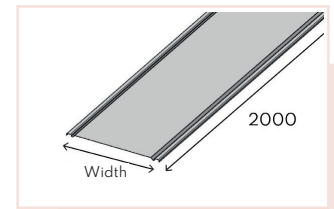
Grooved covers

The groove in the cover makes assembly faster and more rigid.
4 CLCT clips are required per cover.

2 meters.

CPT

	Pack. ML	Width MM	Kg/ML	SZ	HDG	SS316L	Magnelis®
CPT 51	6	51	0.37	145052	245052	645052	M-145052
CPT 75		75	0.48	145076	245076	645076	-
CPT 99		99	0.59	145102	245102	645102	M-145102
CPT 147		147	0.82	145152	245152	645152	M-145152
CPT 195		195	1.02	145202	245202	645202	M-145202
CPT 268		268	1.88	145269	-	645269	M-145269
CPT 316		316	2.05	145302	245302	-	M-145302
CPT 412		412	3.55	145402	245402	645402	M-145402
CPT 508		508	4.32	145502	245502	645502	M-145502
CPT 604		604	5.09	145602	245602	645602	M-145602

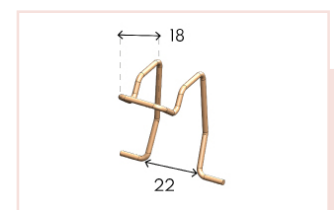


Cable tray clips

Secure clips : secure cables - Fixing accessory.
The clip easily secures the grooved cover to trunking to its shape.
For assembling in windy conditions, it is advisable to use strapping.
Provide 4 CLCT clips per grooved cover of 2 meters.

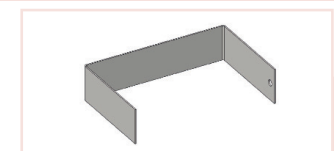
CLCT

	Pack. P	Kg/P	SZ
CLCT	10	0.01	356048



End plates

End plates in GP2 and GP4 are packed per 2 pieces.



	Kg/P	SZ	HDG
GP2 end plate -51	0.15	B-180050	B-280050
GP2 end plate -99	0.17	B-180100	B-280100
GP2 end plate -147	0.20	B-180150	B-280150
GP2 end plate -195	0.23	B-180200	B-280200
GP2 end plate -316	0.29	B-180300	B-280300

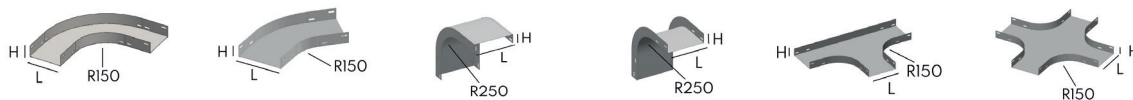
	Kg/P	SZ	HDG
GP4 end plate -99	0.36	B-197100	B-297100
GP4 end plate -147	0.41	B-197150	B-297150
GP4 end plate -195	0.46	B-197200	B-297200
GP4 end plate -316	0.60	B-197300	B-297300
GP4 end plate -412	0.70	B-197400	B-297400
GP4 end plate -508	0.81	B-197500	B-297500

Fitting elements - Sendzimir

Elbows

Elbows with different radii can be produced on request.

* Radius on the bottom for 90° VI inside elbow and 90° VE outside elbow.



Height	Width	90° elbow	135° elbow	90° VI inside elbow *	90° VE outside elbow *	Equal tee	Cross
48 - GP2	W. 51	PI70105	PI74105	PI70105-I	PI70105-E	PI72105	PI77105
	W. 99	PI70110	PI74110	PI70110-I	PI70110-E	PI72110	PI77110
	W. 147	PI70115	PI74115	PI70115-I	PI70115-E	PI72115	PI77115
	W. 195	PI70120	PI74120	PI70120-I	PI70120-E	PI72120	PI77120
	W. 316	PI70130	PI74130	PI70130-I	PI70130-E	PI72130	PI77130
	W. 412	PI70140	PI74140	PI70140-I	PI70140-E	PI72140	PI77140
	W. 508	PI70150	PI74150	PI70150-I	PI70150-E	PI72150	PI77150
96 - GP4	W. 99	PI70310	PI74310	PI70310-I	PI70310-E	PI72310	PI77310
	W. 147	PI70315	PI74315	PI70315-I	PI70315-E	PI72315	PI77315
	W. 195	PI70320	PI74320	PI70320-I	PI70320-E	PI72320	PI77320
	W. 316	PI70330	PI74330	PI70330-I	PI70330-E	PI72330	PI77330
	W. 412	PI70340	PI74340	PI70340-I	PI70340-E	PI72340	PI77340
	W. 508	PI70350	PI74350	PI70350-I	PI70350-E	PI72350	PI77350

Fitting covers

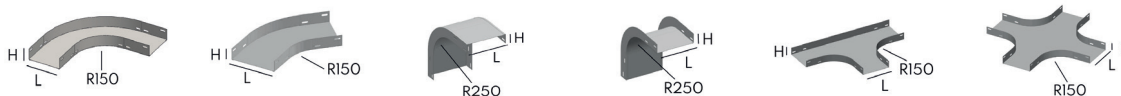


	90° elbow cover	135° elbow cover	90° VI inside elbow cover *	90° VE outside elbow cover *	Equal tee cover	Cross cover
W. 51	PI71050	-	PI71050-I-*	PI71050-E-*	PI73050	PI75050
W. 99	PI71100	PI78100	PI71100-I-*	PI71100-E-*	PI73100	PI75100
W. 147	PI71150	PI78150	PI71150-I-*	PI71150-E-*	PI73150	PI75150
W. 195	PI71200	PI78200	PI71200-I-*	PI71200-E-*	PI73200	PI75200
W. 316	PI71300	PI78300	PI71300-I-*	PI71300-E-*	PI73300	PI75300
W. 412	PI71400	-	PI71400-I-*	PI71400-E-*	PI73400	PI75400
W. 508	PI71500	PI78500	PI71500-I-*	PI71500-E-*	PI73500	PI75500
Clips CLCT voir p.41	Provide 4 clips	Provide 4 clips	Provide 4 clips	Provide 4 clips	Provide 6 clips	Provide 8 clips

* For VI & VE covers, add the height of your choice : 48-96 Ex : 90° VI inside elbow cover, Width 51, height 48 = PI71050-I-48.

Elbows

Elbows with different radii can be produced on request.
 * Radius on the bottom for 90° VI inside elbow and 90° VE outside elbow.
 Magnelis on request : Add «M» in front the reference of your choice. Ex : 90° elbow 51x48 = M-P170105.



Height	Width	90° elbow	135° elbow	90° VI inside elbow*	90° VE outside elbow*	Equal tee	Cross
48 - GP2	W. 51	P270105	P274105	P270105-I	P270105-E	P272105	P277105
	W. 99	P270110	P274110	P270110-I	P270110-E	P272110	P277110
	W. 147	P270115	P274115	P270115-I	P270115-E	P272115	P277115
	W. 195	P270120	P274120	P270120-I	P270120-E	P272120	P277120
	W. 316	P270130	P274130	P270130-I	P270130-E	P272130	P277130
96 - GP4	W. 99	P270310	P274310	P270310-I	P270310-E	P272310	P277310
	W. 147	P270315	P274315	P270315-I	P270315-E	P272315	P277315
	W. 195	P270320	P274320	P270320-I	P270320-E	P272320	P277320
	W. 316	P270330	P274330	P270330-I	P270330-E	P272330	P277330
	W. 412	P270340	P274340	P270340-I	P270340-E	P272340	P277340
	W. 508	P270350	P274350	P270350-I	P270350-E	P272350	P277350

Fitting covers



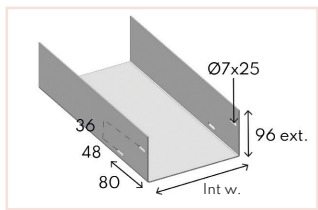
	90° elbow cover	135° elbow cover	90° VI inside elbow cover*	90° VE outside elbow cover*	Equal tee cover	Cross cover
W. 51	P271050	P278050	P271050-I-*	P271050-E-*	P273050	P275050
W. 99	P271100	P278100	P271100-I-*	P271100-E-*	P273100	P275100
W. 147	P271150	P278150	P271150-I-*	P271150-E-*	P273150	P275150
W. 195	P271200	P278200	P271200-I-*	P271200-E-*	P273200	P275200
W. 316	P271300	P278300	P271300-I-*	P271300-E-*	P273300	P275300
W. 412	P271400	P278400	P271400-I-*	P271400-E-*	P273400	P275400
W. 508	P271500	P278500	P271500-I-*	P271500-E-*	P273500	P275500
Clips CLCT voir p.41	Provide 4 clips	Provide 4 clips	Provide 4 clips	Provide 4 clips	Provide 6 clips	Provide 8 clips

* For VI & VE covers, add the height of your choice : 48-96 Ex : 90° VI inside elbow cover, Width 51, height 48 = P271050-I-48.

Floor trunking

Trunking

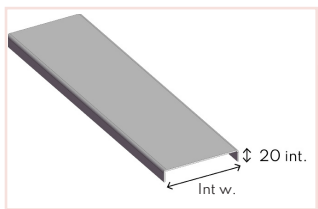
GA 4 3 meters.
Straight flanges.
Connecting with EP4 connectors.



	Pack. ML	Width MM	Th. MM	Kg/ML	SZ
GA4 99 - 15	3	99	1.50	3.43	GS499-15
GA4 195 - 15		195	1.50	4.56	GS4195-15
GA4 316 - 15		316	1.50	5.98	GS4316-15
GA4 412 - 15		412	1.50	7.11	GS4412-15
GA4 508 - 15		508	1.50	8.24	GS4508-15
GA4 99 - 20	3	99	2.00	4.57	GS499-20
GA4 195 - 20		195	2.00	6.08	GS4195-20
GA4 316 - 20		316	2.00	7.98	GS4316-20
GA4 412 - 20		412	2.00	9.48	GS4412-20
GA4 508 - 20		508	2.00	10.99	GS4508-20

Covers

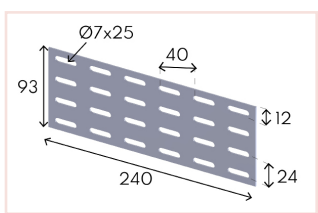
CVS 3 meters.
HDG on request.



	Pack. ML	Width MM	Th. MM	Kg/ML	SZ
CVS 99	3	99	2.20	1.87	GACC99
CVS 195		195	3.70	3.38	GACCI95
CVS 316		316	5.60	5.28	GACC316
CVS 412		412	6.78	6.78	GACC412
CVS 508		508	8.29	8.29	GACC508

Connector

EP 4 Allows two trunking systems to be connected to each other.
Provide four 6x12 TRCC bolts per connectors.



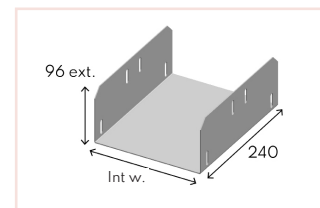
	Pack. P	Kg/P	SZ
EP 4	25	0.31	196000

Sleeves

Allows two trunking systems to be connected to each other.

MA4

	Pack. ML	Width MM	Kg/P	SZ
MA 99	1	99	1.02	GAMC499
MA 195		195	1.39	GAMC4195
MA 316		316	1.84	GAMC4316
MA 412		412	2.21	GAMC4412
MA 508		508	2.61	GAMC4508

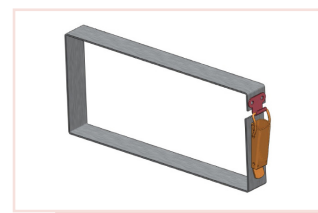


Strapping

Fixing accessory.
Allows the cover to be fixed to the trunking.

CA4

	Pack. ML	Width MM	Kg/P	SZ
Strapping 99	1	99	0.14	GACE99
Strapping 195		195	0.14	GACE195
Strapping 316		316	0.19	GACE316
Strapping 412		412	0.23	GACE412
Strapping 508		508	0.28	GACE508



Divider

3 meters.
Allows circuits to be separated on a common circuit.

CHTP

	Pack. ML	Width MM	Kg/ML	SZ
CHTP	3	94	0.75	GAL496

